



## 27 Armstrong Road, Englefield Green, TW20 0RW

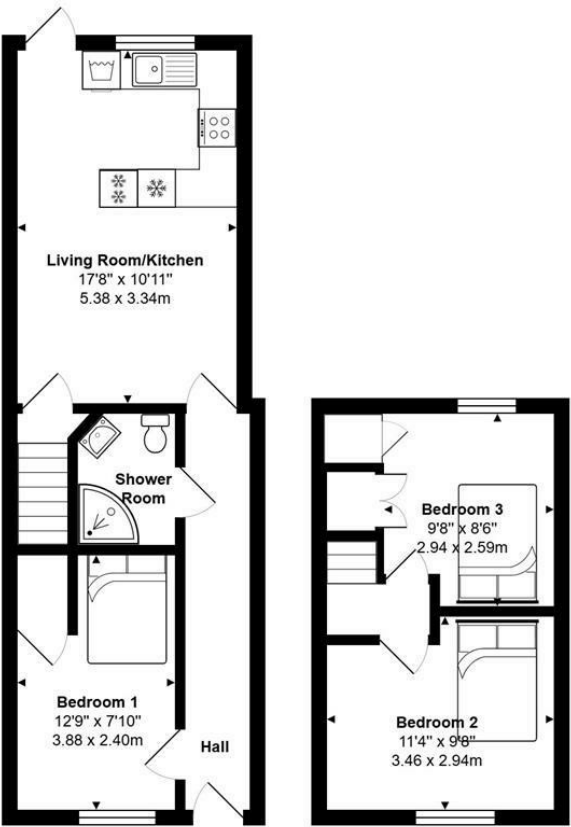
Student Property – Just a 5-Minute Walk to the University Entrance!

This property is undergoing a complete refurbishment and will be finished to a high standard.





Floor Plan

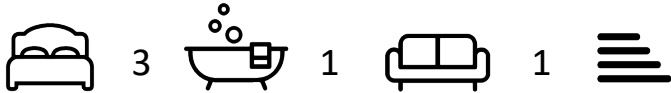


Total Area: 655 ft² ... 60.8 m²



Features

10 St Judes Road, Englefield Green, Surrey TW20 0BY  
Tel 01784 433696  
sales@aspenestateagents.co.uk



Tenure - Council Tax Band - D

